

# DIVINE



[www.meekellecostumes.com](http://www.meekellecostumes.com). [www.meekelle2.com](http://www.meekelle2.com)

[bmeekelle@aol.com](mailto:bmeekelle@aol.com). (337). 288-1767



# Weekelle

C20191-Low Beam

Leotard has high neck banding style top with an off the shoulder look and attached back mesh skirt.

*(Shown in Mist foil and mesh)*

*\*\*\*Optional lace applique trim sold separately.*





A woman with long dark hair is posing in a garden. She is wearing a metallic mesh leotard with a sweetheart neckline and a built-in bra and dance trunk. The leotard is adorned with intricate lace applique and rhinestones. She is leaning against a tree trunk, and the background is filled with lush green foliage and a wooden fence.

# Meekelle<sup>INC.</sup>

C21092-Road

Metallic Mesh  
sweetheart style  
leotard has built in  
bra and dance trunk

*(Shown in metallic Mesh and  
Nylon lycra)*

\*\*\* Lace applique sold  
separately.

\*\*\*Rhinestones sold  
separately.





# Meekelle

INC.

C20193-Sanctuary

Leotard has high neck halter style top with built in mesh insert down middle front with back mesh skirt and attached dance trunks.

*(Shown in Distressed mist foil and metallic mesh)*

\*\*\*Optional appliqués sold separately.

\*\*\* Optional rhinestones on neckline and bodice sold separately.





# Meekelle

INC

## C20194-Irresistible

Leotard has front V mesh insert at neckline and side waist fronts with sleeves.

*(Shown in Distressed velvet and Mesh)*

\*\*\*Optional  
Rhinestones sold  
separately.





# Meekelle

INC

## C20195-Golden Embers

**Leotard has one shoulder wrap around neck style with one attached mesh sleeve. Leotard is mesh with lined front bra area and complete dance trunk area.**

*(Shown in Nylon lycra and Glitter mesh)*

*\*\*\*Optional applique trim sold separately.*

*\*\*\*Rhinestones on bodice front sold separately.*

*\*\*\*Applique piece for wrist or hair sold separately.*



# Meekelle

INC

C20196-You there

Banded leotard has  
criss cross style open  
front with attached  
gathered back skirt.

*(Shown in Distressed velvet,  
Mist foil and Metallic mesh.)*





**C20197-Metallix**

**Leotard has high neck, overlaid bra with mesh and fabric with built in mesh sides and mesh sleeves.**

*(Shown in City mist foil and metallic mesh)*

*\*\*\*Optional beaded shoulder epaulets and matching waist appliques sold separately.*

*\*\*\*Hairpiece applique and beaded fringe sold separately.*

**Meekelle**  
INC





# Meekelle INC

## C20198-Space Camel

Leotard has halter style neck and built in sweetheart lined plunge mesh insert and detachable mesh sleeves.

*(Shown in Mist foil and Metallic mesh)*

\*\*\*Optional beaded and embroidered applique trim sold separately.

\*\*\*Optional mesh shrug sold separately.





# Meekelle INC

## C20199-Cold Blooded

Leotard has Mesh accented upper neckline and striped inserts on midriff area with long mesh and velvet accent sleeves.

*(Shown in Distressed Velvet and Metallic Mesh.)*

\*\*\*Optional rhinestones sold separately.



# Meekelle<sup>INC</sup>

## C201910-The Immortals

Around the neck  
leotard has banded  
neckline and banded  
mesh midriff diamond  
design with banded  
briefs..

*(Shown in City Mist, Mist  
foil and Metallic Mesh)*

\*\*\*Optional beaded and sequin  
lace appliqué sold separately.

\*\*\*Optional arm bands sold  
separately.







Meekelle<sup>INC</sup>

**C201911-Takeaway**

Leotard has gathered bra top, around the neck style halter attached to vertical and horizontal mesh striped dance trunks that come fully lined.

( Shown in Luxury Velvet and Boulevard Mesh.)

\*\*\*Optional lace applique sold separately.

\*\*\*Optional rhinestones sold separately.

\*\*\*Optional choker with appliqué and stones sold separately.





Meekelle  
INC

**C201911-Takeaway**

Leotard has gathered bra top, around the neck style halter attached to vertical and horizontal mesh striped dance trunks that come fully lined.

( Shown in Luxury Velvet and Boulevard Mesh.)

\*\*\*Optional lace applique sold separately.

\*\*\*Optional rhinestones sold separately.

\*\*\*Optional choker with appliqué and stones sold separately.

\*\*\*Optional wrist cuff sold separately.

**C201912-Mesh shrug (shown on right) sold separately**





Meekelle  
INC

### C201913-Legend

Unitard has striped mesh lined insert at neckline and mesh inserts at waist front area sides with attached striped mesh sleeves and insert at right leg bottom.

*(Shown in Mist Foil, Mesh and Boulevard Mesh)*

\*\*\*Optional rhinestones sold separately

\*\*\*Optional hairpiece sold separately.





**Meekelle**  
INC

**C201914-Paint me Silver**

Leotard has long sleeves and v mesh insert at neckline with banded waist and attached back skirt.

*(Shown in Arabella Velvet and Metallic Mesh)*

*\*\*\*Optional rhinestones sold separately.*





# Meekelle<sup>INC</sup>

## **C201915-Butterflies**

**Two piece dance set has mesh gathered right side bodice and turtleneck with banded bra top and pull on mesh skirted dance trunks and banded waist.**

*(Shown in Nylon Lycra and Mesh)*

*\*\*\*Optional beaded dimensional lace appliques sold separately.*



# Meekelle

INC.

**C201916-San Luis**

**Banded halter style leotard  
has attached back mesh  
skirt .**

*(Shown in Mist Foil ,Nylon Lycra  
and Mesh)*

*\*\*\*Optional Lace appliques sold  
separately.*

*\*\*\*Optional rhinestones sold  
separately.*







# Meekelle INC

**C201917-Mint 2 B**

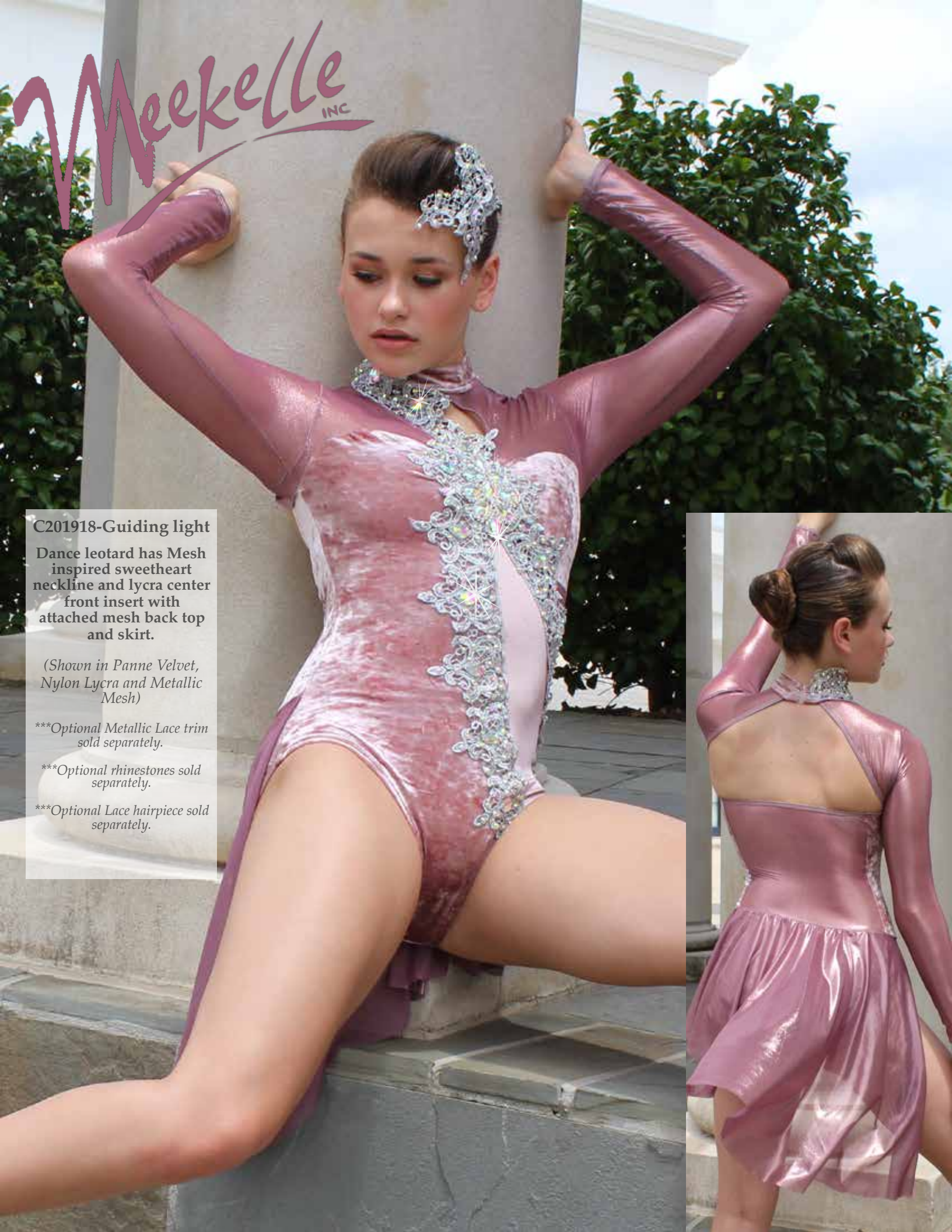
**Leotard has halter style top and built in lined mesh connected middle to skirted dance trunks.**

*(Shown in Nylon lycra and mesh)*

*\*\*\*Optional beaded and embroidered style applique trim sold separately.*

*\*\*\*Optional rhinestones sold separately.*





Meekelle  
INC

### C201918-Guiding light

Dance leotard has Mesh inspired sweetheart neckline and lycra center front insert with attached mesh back top and skirt.

*(Shown in Panne Velvet, Nylon Lycra and Metallic Mesh)*

\*\*\*Optional Metallic Lace trim sold separately.

\*\*\*Optional rhinestones sold separately.

\*\*\*Optional Lace hairpiece sold separately.





# Meekelle<sup>INC</sup>

## C201919-Spirit Garden

One shoulder leotard has turtleneck look in front with one bra side with opposite side front and back mesh skirt overlay.

*(Shown in Nylon Lycra and Mesh)*

*\*\*\*Optional Lace dimensional applique sold separately.*







Meekelle  
INC

**C201920-Younger days**

**Leotard has one shoulder design and opposite bra style top with mesh attached front and back overlay to the turtleneck.**

*(Shown in Nylon Lycra and Mesh)*

\*\*\*Optional 3 dimensional appliques sold separately.

\*\*\*Optional rhinestones sold separately.

\*\*\*Optional hairpiece sold separately.





**Meekelle**  
INC

**C201921-Angels Wings**

**Halter style mesh leotard with built in bra and dance trunk has attached back drape design mesh accent.**

*(Shown in Glitter Mesh and Nylon lycra)*

*\*\*\*Optional applique sold separately*

*\*\*\*Optional rhinestones sold separately*





# Meekelle<sup>INC</sup>

## C201922-New Moon

Leotard has mesh inspired sweetheart neckline with long mesh sleeves and v inset on front bodice with accent mesh drapes on side hip

*(Shown in Luxury Velvet and Mesh)*

\*\*\*Optional lace appliques sold separately.

\*\*\*Optional rhinestones sold separately.

\*\*\*Optional hairpiece sold separately.





**C201923-Sea of Love**

**Dance dress has halter style banded top with mesh side inserts and built in front to back mesh skirt.**

*(Shown in Nylon lycra and Mesh)*

*\*\*\*Optional Lace flower appliques sold separately.*

*\*\*\* Optional rhinestones sold separately.*





*Meekelle*  
INC.

**C201924-Video child**

**Leotard has banded neck with mesh accented shoulders and sleeves.**

*(Shown in Velvet and Mesh)*

\*\*\*Optional lace 3 D appliques sold separately.

\*\*\*Optional rhinestones sold separately.

\*\*\*Optional hairpiece sold separately.





Meekelle  
INC

**C201925-For Now**

**Dance dress has bra top  
design with swag style  
attached mesh skirt and  
built in trunks.**

*(Shown in Velvet and Mesh)*

*\*\*\*Optional lace 3 D applique sold  
separately.*

*\*\*\*Optional rhinestones sold  
separately.*





**Meekelle**  
INC

**C201926-Fire in the water**

**Leotard has high neck and built  
in mesh upper left shoulder ,  
middle left waist area and  
sleeves.**

*(Shown in Nylon lycra and mesh)*

*\*\*\*Optional appliques sold separately.*

*\*\*\*Optional rhinestones sold separately.*





**Meekelle**  
INC

**C201927-Chateau**

**Dance set has one shoulder top and  
connected wrap mesh center with  
built in briefs.**

*(Shown in Velvet and Mesh)*

*\*\*\*Optional Lace appliques sold separately.*

*\*\*\*Optional rhinestones sold separately.*



# Meekelle

INC



## C201928-I'm Amazed

Dance dress has scoop neckline and puff sleeves with drop ruffle flair sleeves and A-line attached Mesh skirt and briefs.

*(Shown in Glitter Mesh and Satin Lycra)*

\*\*\*Optional lace appliques sold separately.

\*\*\*Optional rhinestones sold separately.



C201929-Grace

Two piece dance set has scoop neck crop top with puff sleeves and lace accented mesh sleeves with pull on two tone Lycra and mesh skirt with attached trim.

*(Shown in Satin Lycra and Glitter Mesh.)*

*\*\*\*Optional lace appliques on bodice and skirt sold separately.*

*\*\*\*Optional rhinestones sold separately.*

*Meekelle*  
INC





Meekelle  
INC

**C201930-Galway Girls**

**Two piece dance set has crop top with puff sleeves and cinched front with pull on banded dance trunks and side to back stiffened skirt.**

*(Shown in Arabella Velyet and Mist Foil with stiff sheer)*

\*\*\*Optional rhinestone appliques sold separately.

\*\*\*Optional hairpiece sold separately.





**Meekelle**  
INC

**C201931-Banana Pancakes**

**Two piece dance set has sheer mesh top overlay over banded bra top and double layer bustle back briefs.**

*(Shown in glitter mesh and ombre croc foil.)*

\*\*\*Optional Lace appliques and flower trim sold separately.

\*\*\*Optional rhinestones sold separately.

\*\*\*Hair piece sold separately.





**Meekelle**  
INC.

**C201932-Dig a little deeper**

Two piece dance set has halter style crop top with sheered neck collar and pull on banded dance shorts with ruffled two layer stiff sheer skirt.

(Shown in Nylon Lycra and Holo Tulle and stiff sheer.)

\*\*\*Optional flower appliques sold separately.

\*\*\*Optional rhinestones sold separately.





# Meekelle INC

**C201933-The Gospel Truth**

**Two piece dance set has ruffled shoulder accents and pull on dance shorts with two tone gathered stiff sheer skirt.**

*(Shown in Nylon Lycra and Holo Tulle with Stiff sheer.)*

\*\*\*Optional flower appliques sold separately.

\*\*\*Optional rhinestones sold separately.

\*\*\*Optional hairpieces sold separately.



**Meekelle**  
INC



**C201934-Poppy**

**Two piece dance set has off the shoulder crop top with short sleeves and pull on dance brief with back ruffled bustle and butt bow.**

*(Shown in Nylon Lycra and Stiff sheer with Mist Foil bow)*

\*\*\*Optional flower appliques sold separately.

\*\*\*Optional choker sold separately.

\*\*\*Optional double flower hairpiece.





Meekelle  
INC

**C201935-Zero to Hero**

**Two piece dance set  
has fringed bra crop  
top with fringed pull  
on dance shorts.**

*(Shown in Nylon Lycra  
and sequin fringe.)*

\*\*\*Optional hairpiece sold  
separately.





**C201936-Crystal**

**Dance dress has mesh designed overlay top with banded neckline and cutout back detail with beaded fringe skirt over attached briefs.**

*(Shown in Glitter Mesh and Mist Foil with Nylon Lycra.)*

\*\*\* Optional Lace 3 D appliques sold separately.

\*\*\*Optional rhinestones sold separately.

\*\*\*Optional choker with trim sold separately.





# Meekelle<sup>INC</sup>

**C201937-Dream a Little Dream**

Two piece dance set has two toned front crop top with ruffled lace embroidered short sleeves and pull on two toned banded brief with back lace ruffled stiff skirt.

*(Shown in Velvet and Floral lace and Stiff sheer.)*

\*\*\* Optional rhinestone applique sold separately.

\*\*\*Optional rhinestones sold separately.

\*\*\* Optional hairpiece sold separately.





# Meekelle

INC

## C201938-Mr. Postman

Two piece dance set has two toned front bra crop top and lace lined seams with pull on two toned dance brief and back stiff bustle type skirt with matching lace appliques.

*(Shown in Nylon Lycra and Stiff sheer.)*

\*\*\*Optional feather trim sold separately.

\*\*\* Optional rhinestones appliques sold separately.

\*\*\* Optional rhinestones sold separately.

\*\*\*Optional hairpiece sold separately.

\*\*\*Optional arm mitts sold separately.





*Meekelle*  
INC

**C201939-Purple People eater**

**Two piece dance set has two tone crop top and dance trunk with banded accents and floral embroidered skirt and sleeves with stiff underside. Top comes enhanced with lace embroidered appliques.**

*(Shown in Nylon Lycra and floral lace trim)*

\*\*\*Optional rhinestones sold separately

\*\*\*Optional rhinestone applique sold separately

\*\*\*Optional arm bands sold separately





**Meekelle**  
INC

**C201940-Love is strange**  
**Two piece dance set has**  
**v front crop bustier**  
**style top with ruffled**  
**stiff neckline and pull**  
**on banded dance briefs**  
**with double layer stiff**  
**skirts.**

*(Shown in Mist Foil and  
Heart Tulle with Stiff sheer.)*

\*\*\*Optional lace and rhinestone  
rosettes.

\*\*\*Optional hairpiece sold  
separately.





**Meekelle**  
INC

**C201940-Love is strange**

**Two piece dance set has  
v front crop bustier  
style top with ruffled  
stiff neckline and pull  
on banded dance briefs  
with double layer stiff  
skirts.**

*(Shown in Mist Foil and  
Heart Tulle with Stiff sheer.)*

\*\*\*Optional rhinestone appliques  
sold separately.

\*\*\*Optional ruffled wrist mitts  
sold separately.

\*\*\*Optional hairpieces sold  
separately.





**Meekelle**  
INC

**C201941-Sunflower**

**Two piece dance set has halter style top with flower added appliques and banded neckline with off the shoulder style sleeves and double flair accents Pull on dance briefs have back ruffled stiff sheer skirt and flower appliques on front.**

*(Shown in Nylon Lycra and Mesh.)*





**Meekelle**  
INC

C201942-Blazin

Leotard has strip style mesh inserts on front halter bodice and mesh center back with attached mesh open underarm sleeves and Velvet briefs.

*(Shown in Velvet and Print Mesh.)*

\*\*\*Optional rhinestones sold separately.



# Meekelle<sup>INC</sup>

## C201943-Touche

Two piece dance set  
has one shoulder top  
design with banded  
neckline and pull on  
high waisted two  
toned briefs.

(Shown in Nylon Lycra.)

\*\*\*Optional Lace appliques sold  
separately.

\*\*\*Optional rhinestones sold  
separately.

\*\*\*Optional rhinestone  
applique sold separately.

\*\*\*Optional feather shoulder  
trim sold separately.

\*\*\*Optional hairpiece sold  
separately.







# Meekelle<sup>INC</sup>

**C201944-Once Was**  
Dance leotard has one  
shoulder design with  
attached banded neck  
and satin bow detail  
with back lace trimmed  
satin skirt and stiff sheer.

*(Shown in Velvet and Satin  
with Glitter stiff sheer.)*

\*\*\*Optional Lace flower appliques  
(neckline, choker area and back  
waist seam area) sold separately.

\*\*\* Optional hairpiece sold  
separately.



# Meekelle<sup>INC</sup>



## **C201945-Mama Told Me**

**Two piece dance set has one shoulder with long sleeve crop top and pull on banded bustled back Lace trimmed Satin skirt with stiff underskirt.**

*(Shown in Velvet and Satin with Glitter stiff.)*

*\*\*\*Optional Lace shoulder trim and Lace style appliques sold separately.*

*\*\*\*Optional rhinestones sold separately.*





**C201946-Zootopia**

Leotard has ruffled neckline and low scoop back look with lace up detail.

*(Shown in Zebra Velvet and Nylon Lycra.)*

\*\*\*Optional Lace flower appliques sold separately.

**Meekelle**  
INC.





**Meekelle**  
INC

**C201947-Twinkie**

**Two piece dance set has  
around the neck style  
cinched front crop top  
and banded style side to  
back double skirted  
brief.**

*(Shown in Ombre Croc Foil  
and Holo Mesh and Stiff  
sheer.)*





# Meekelle<sup>INC</sup>

**C201931-Banana Pancakes**

**Two piece dance set has  
sheer mesh top overlay  
over banded bra top and  
double layer bustle back  
briefs.**

*(Shown in glitter mesh and  
ombre croc foil.)*

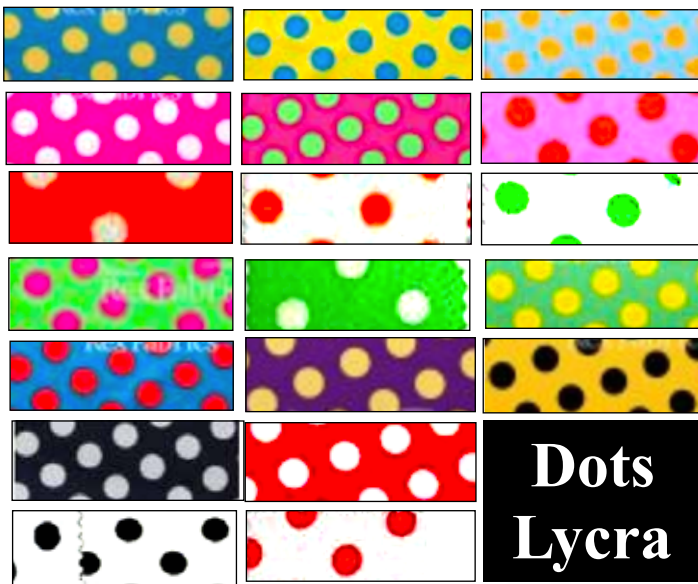


# Fabric Chart

\*\*\*All fabrics are contingent on availability and subject to change\*\*\*

## Nylon Lycra and Mesh Solids

 NY YELLOW	 NY SAFFR	 NY AMARILL	 Teal	 NY BROWN	 NY PURPLE	 NY WHITE	 NY IVORY	 NY MARSH	 NY BT ORANGE	 NY PERSIMMON	 NY DK PERSIMMON
 Copper	 Olive	 Kiwi	 Neon Pink	 Off White	 Nude	 Blush	 Mustard	 Red	 Brick	 Burgundy	 Wine
 NY STEEL	 NY TITANIUM	 NY CHARCOAL	 NY BLACK	 NY LT PINK	 NY PINK	 NY BUBBLES	 NY SALMON	 NY FUCHIA	 NY NEON ORANGE	 NY ORANGE	 NY CORAL
 Light Blue	 Aqua	 Seafoam	 Marine	 Hibiscus	 Raspberry	 Cantaloupe	 Light peach	 Neon Green	 Kelly	 Emerald	 Jade
 NY TURQUOISE	 NY CHERRY	 NY SHIRAZ	 NY BERRY	 NY TONER	 NY BONE	 NY DK BONE	 NY ROYAL	 Dk Rose			
 NY PINK	 NY LT PURPLE	 NY STYLY	 NY MIDNIGHT	 NY NAVY	 NY MIDNIGHT	 NY LT SILVER	 NY SILVER	 Terra Cotta	 Lantana		

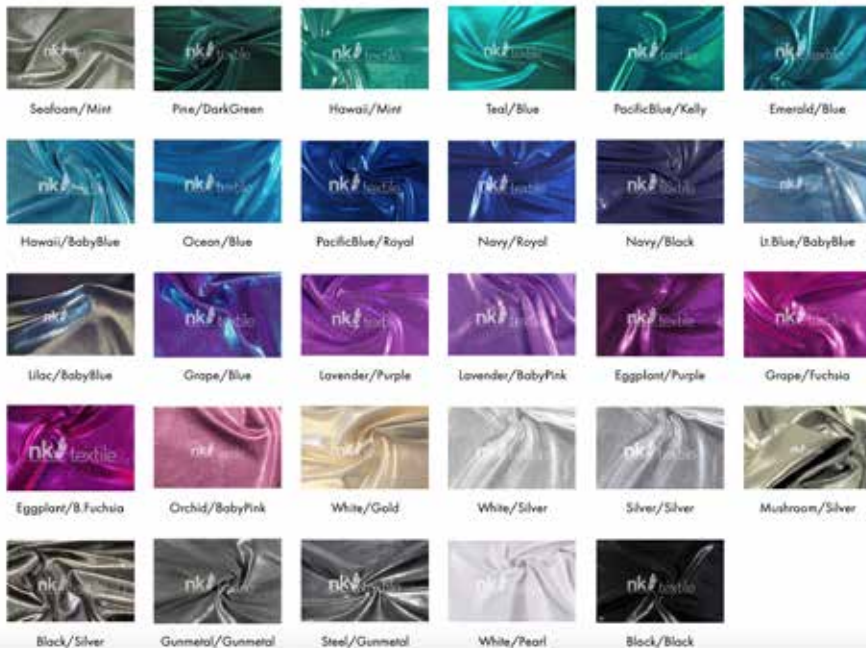




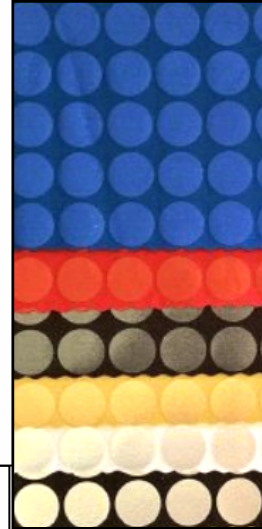
# Metallic Foils

\*\*\*All fabrics are contingent on availability and subject to change\*\*\*

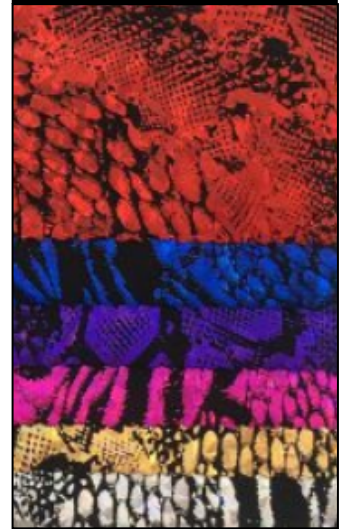
## Mist Foil



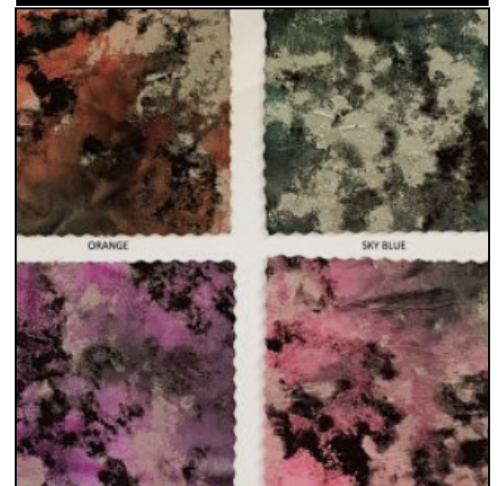
## Spotlight



## Wildlife



## Vintage



## Hologram Mist



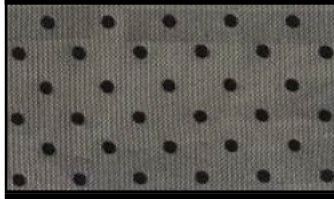


# Stretch Mesh Sheer

\*\*\*All fabrics are contingent on availability and subject to change\*\*\*



Pop Dot Mesh White

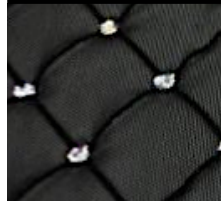


Pop Dot Mesh Black

Boulevard



Diamond



Mary Jane



Camo Mesh



**Bellagio**

Glitter stripes



Holo Dot Mesh



Red  
Yellow  
Orange  
Turq  
Hot pink  
Lime  
Nude  
Black

Glitter Mesh

Lt Blue  
Lt Pink  
White silver  
Fuchsia  
Yellow  
Coral  
Turquoise  
Red  
Emerald  
Teal  
Lilac  
Purple  
Royal  
Black  
Nude/gold

Nude/silver  
Brown  
Neon lime  
Neon org  
Neon yellow  
Neon pink  
Bubblegum  
Periwinkle  
Aqua  
Jade  
Plum  
Wine  
Burgundy  
Charcoal  
Black/sil  
Black/multi

# Non Stretch Sheer

\*\*\*All fabrics are contingent on availability and subject to change\*\*\*

Holo Dot Stiff (Non stretch)



Holo Dot Stiff (Non stretch)





# Sequin Fabric

\*\*\*All fabrics are contingent on availability and subject to change\*\*\*

## Petals Sequin

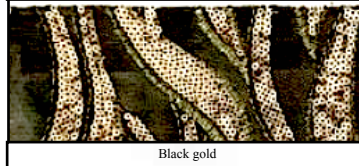


Olive  
Turquoise  
Red  
Navy  
Nude  
White  
Black

## Admire sequin



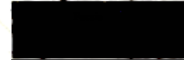
Black silver



Black gold



Fuchsia



Navy



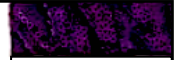
Red



Black



White Silver



Purple



Turq



Green



Nude Gold



White Gold

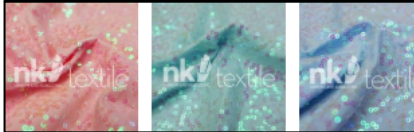
## Arabella Sequin Velvet



## Zsa Zsa pearl



Butterscotch/Pearl  
Ivory/Pearl  
White/Pearl



BabyPink/Pearl  
Mint/Pearl  
Lt.Blue/Pearl

## Zsa spa (hologram) (sequin)



## Zsa Zsa (Bem Bem) (sequin)





# Stretch Velvets

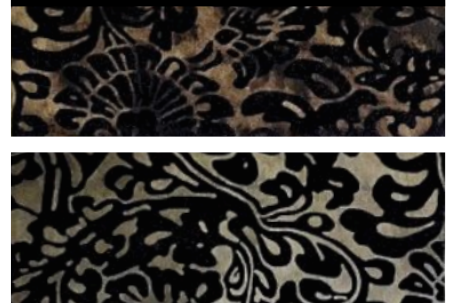
## Stretch Velvet



## Princess Velvet



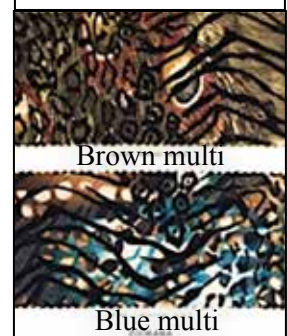
## Damask Velvet



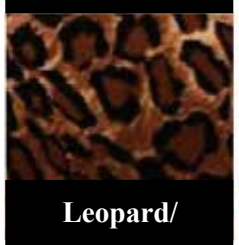
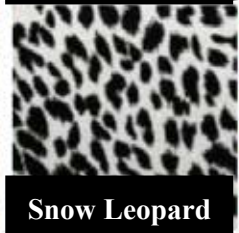
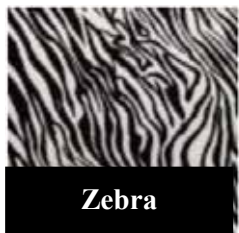
## Boutique Burnout



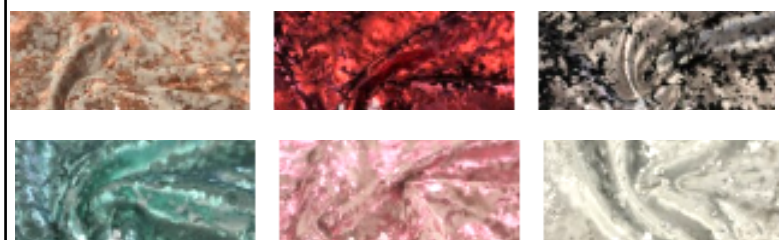
## Zoorama



## Animal Velvet

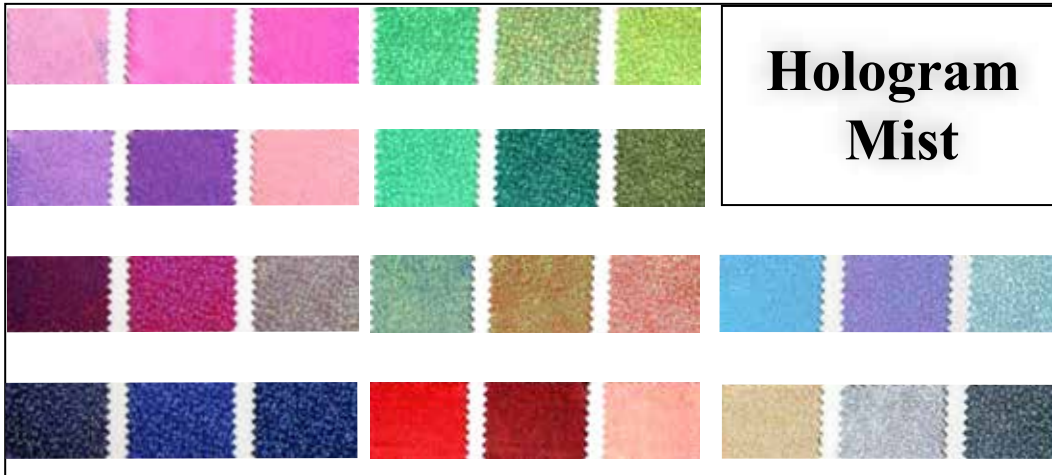
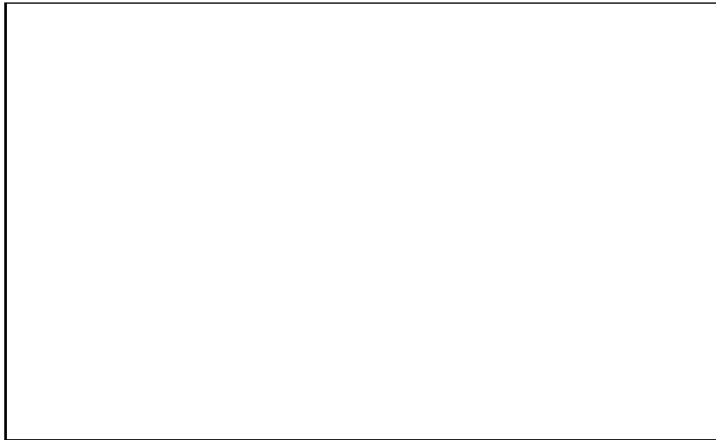


## Gilded Velvet





# Metallic Foils







#2079  
Ivory/Blush



#2025 Navy



#2025 Fuchsia



#2025 Purple



#2025 Mint



Gold

Silver



Gold, Silver



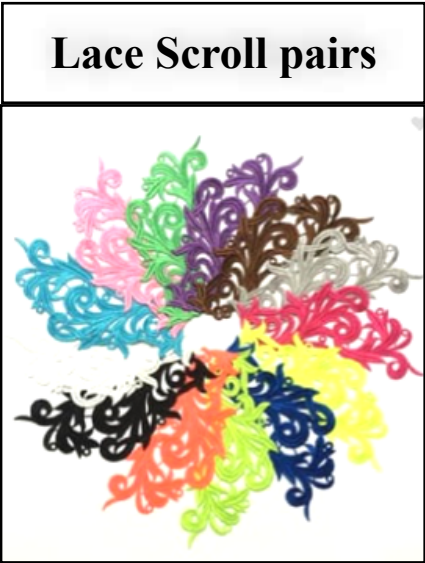
Silver, Gold, White, Black



Silver  
AB



Silver Ab, Silver  
Cry, Gold Cry



Lace Scroll pairs



# Stretch Lace

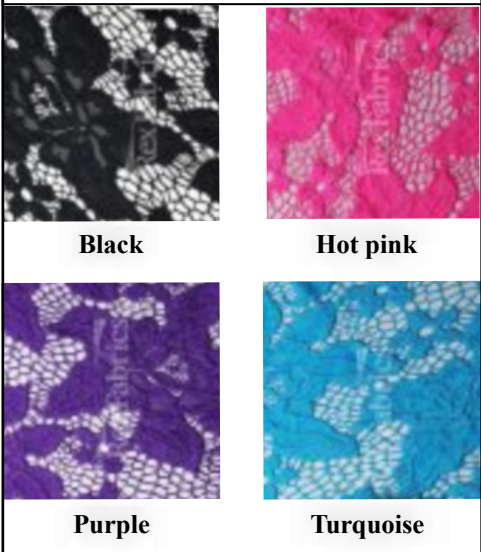
## Passion Flower Lace



## Ada Lace



## Blossom Lace





# Size Chart



[www.meekellecostumes.com](http://www.meekellecostumes.com)

P.O. Box 80506 Lafayette, La. 70598-0506  
(337) 288-1767

<i>Measure around the largest part of the bust</i>	<i>Measure around the smallest part of waist</i>	<i>Feet together measure around the largest part of the hips</i>	<i>Start on top of shoulder down through center crotch up back to same shoulder</i>	<i>Use this as a guide to determining what size you should put a child in but use your own knowledge if you feel otherwise.</i>
<b>Bust</b>	<b>Waist</b>	<b>Hips</b>	<b>Girth</b>	<b>Estimated Size</b>
23-25	20-22	24-26	41-44	Small Child
26-28	21-23	27-29	45-48	Medium Child
29-31	22-24	30-32	49-52	Large Child
32-34	23-25	33-35	53-56	Small Adult
34-36	24-28	36-38	57-59	Medium Adult
36-38	28-30	38-40	60-62	Large Adult

Please call if you need any help with sizing issues. These are rules we usually follow but every situation is unique. Generally the waist measurement on a child is something that we do not take into account unless we know that it is far off the chart. Girth measurements are extremely important on one pieces, however they should be considered on two pieces also. The most important measurements are the bust and hips when determining sizing.

[www.meekellecostumes.com](http://www.meekellecostumes.com)

[www.meekelle2.com](http://www.meekelle2.com)

[bmeekelle@aol.com](mailto:bmeekelle@aol.com)